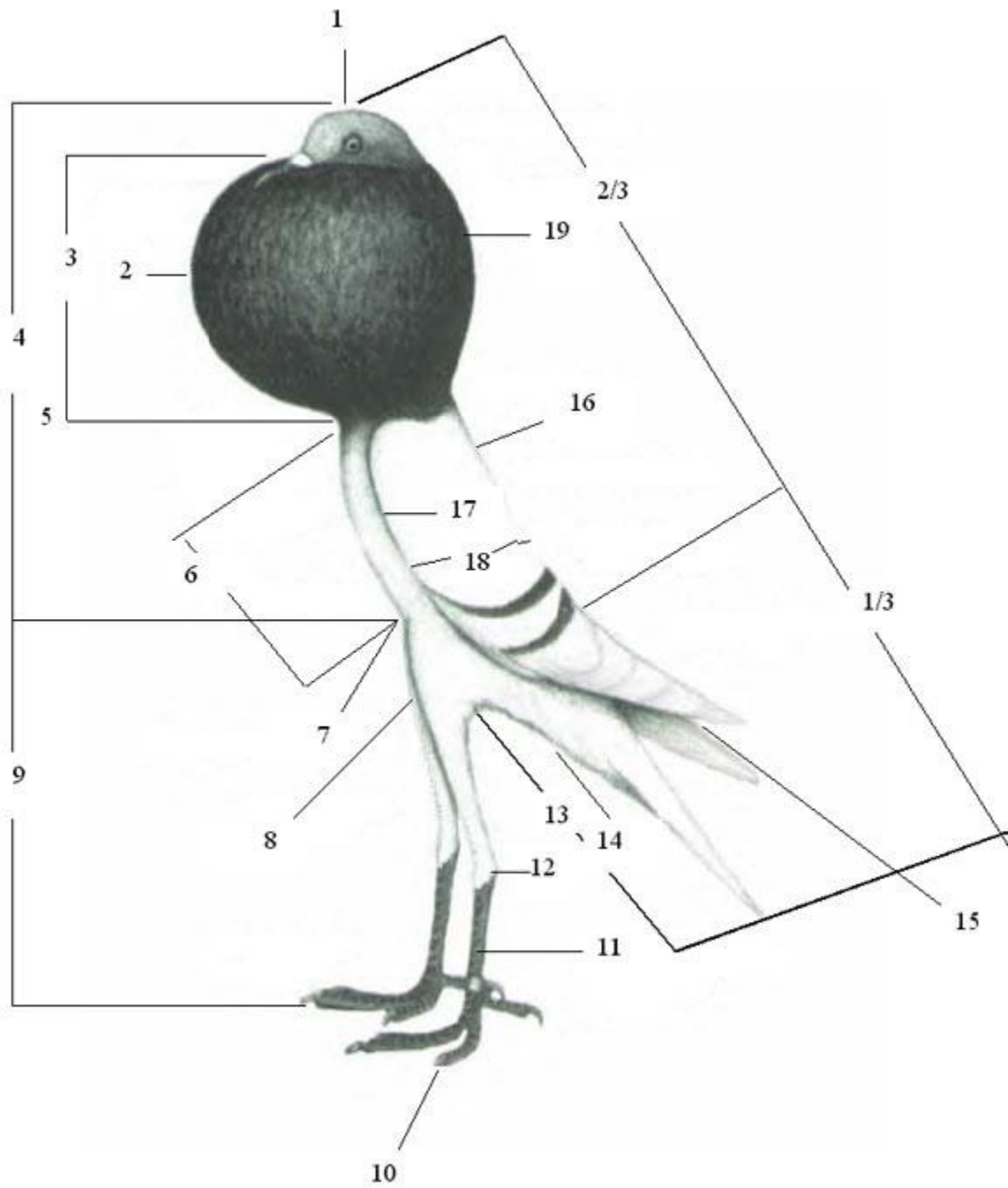


# Proportions of the Ideal Brunner



1. Carriage: Eye over toe
2. Widest part of the globe
3. Length of Neck
4. Body and neck Proportion (two-thirds).
5. Waist
6. Breast Bone
7. Leg Implant
8. Thigh
9. Length of Leg
10. End of Toe
11. Leg Shank
12. Hock Joint
13. Length behind leg (one-third)
14. The vent or wedge
15. Wing Position – Crossed
16. Back in line with tail
17. Body Depth
18. Wing shield width
19. Back Globe

**Taken in part from the German Brunner Pouter Club**